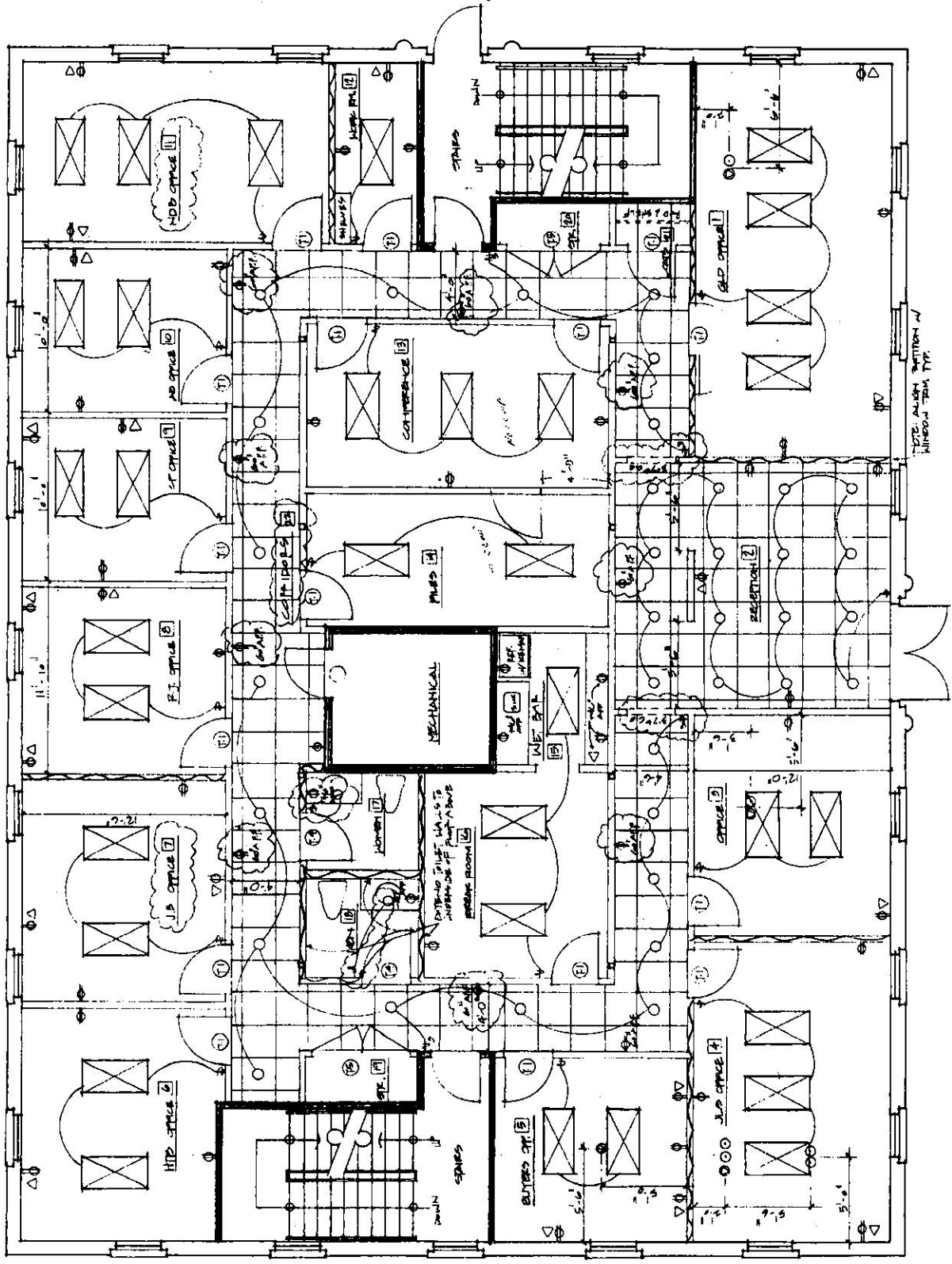


OFFICE SPACE FOR LEASE
GOVERNOR'S RIDGE OFFICE PARK
BUILDING 14, MIDDLE FLOOR
RATES NEGOTIABLE, FLEXIBLE TERMS

APPROXIMATELY 4050 RENTABLE SQUARE FEET INCLUDES:

- ✓ **TWO EXECUTIVE OFFICES APPROXIMATELY 230 SF EACH**
- ✓ **SEVEN OFFICES OF APPROXIMATELY 130 –195 SQUARE FEET**
- ✓ **TWO LARGE CONFERENCE ROOMS APPROXIMATELY 210 AND 250 SQUARE FEET**
- ✓ **LARGE RECEPTION AREA WITH MARBLE FLOOR**
- ✓ **LARGE BREAK AREA WITH WET BAR, CABINETS, ETC.**
- ✓ **STORAGE ROOMS, CLOSETS AND WORK ROOMS**
- ✓ **WEEKEND/NIGHT HEAT AND AIR (TENANT CONTROLLED)**
- ✓ **INCLUDES AMPLE FREE PARKING NEAR BUILDING**
- ✓ **INCLUDES JANITORIAL AND ALL UTILITIES**
- ✓ **NEAR BANKING, SHOPPING, RESTAURANTS, PARKS, RUNNING TRAILS, HOTELS AND UPSCALE RESIDENTIAL**
- ✓ **ATT AND COMCAST ULTRA HIGH SPEED INTERNET, PHONE, TV**
- ✓ **CONVENIENT ACCESS TO I-75/I-285**
- ✓ **ON-SITE OWNER/MANAGEMENT**
- ✓ **BROKERS PROTECTED**

CONTACT: G. WILLIAM SPANN 770-624-1793 (IN PARK)



BUILDING NO. 4 - SECOND FLOOR TENANT PLAN - MAIN LEVEL
 SCALE: 1/8" = 1'-0"
 4050 000 PT.