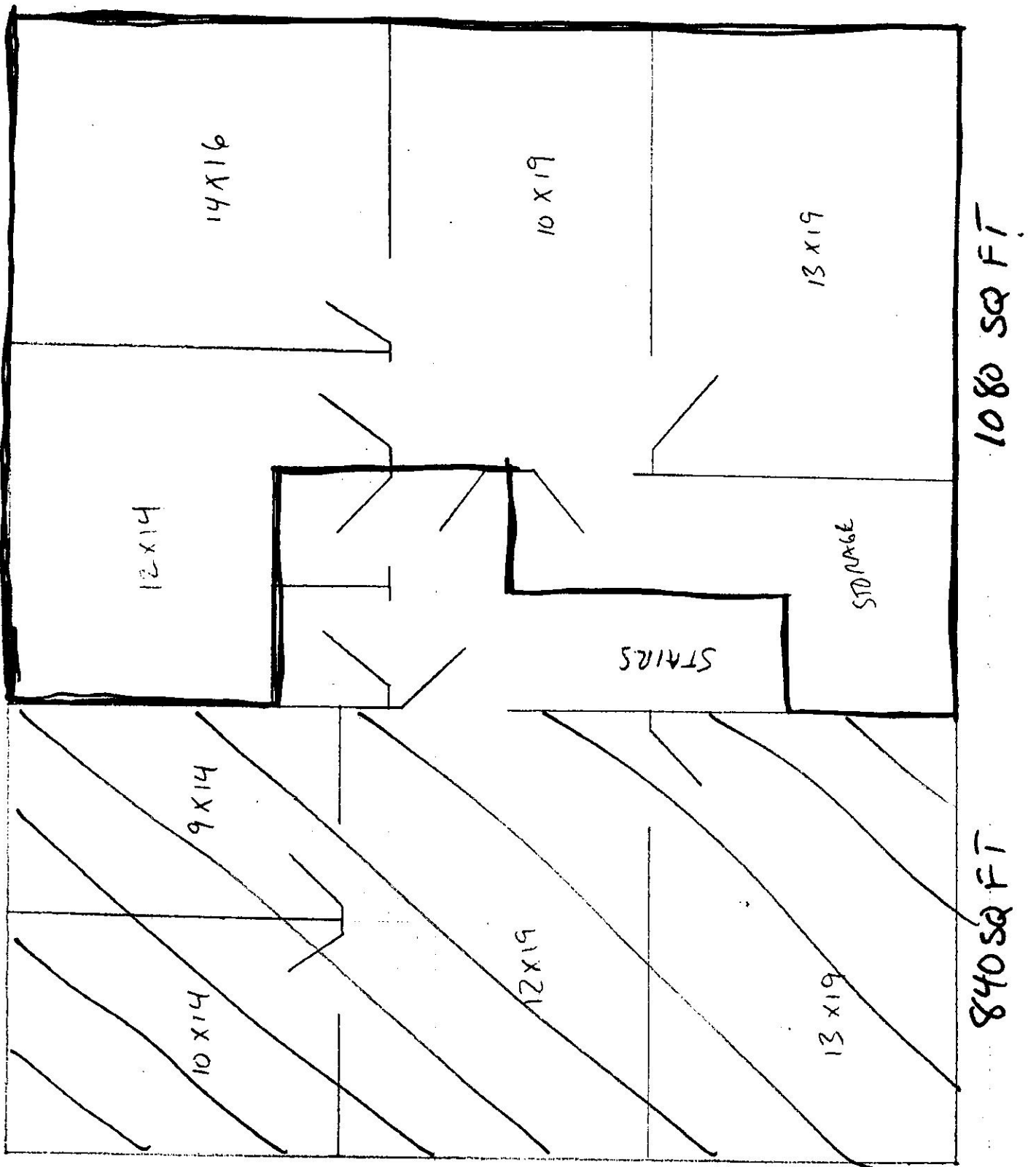


OFFICE SPACE FOR LEASE
GOVERNOR'S RIDGE OFFICE PARK
BUILDING 27

- | |
|--|
| <ul style="list-style-type: none">• 1080 SQUARE FEET AVAILABLE• EXCEPTIONAL OPPORTUNITY IN PRIME LOCATION |
|--|

- ✓ **THREE OFFICES, RECEPTION AREA AND LARGE STORAGE AREA**
- ✓ **24 HOUR AND WEEKEND ACCESS**
- ✓ **WEEKEND/NIGHT HEAT AND AIR (TENANT CONTROLLED)**
- ✓ **INCLUDES AMPLE FREE PARKING NEAR BUILDING**
- ✓ **INCLUDES JANITORIAL AND ALL UTILITIES**
- ✓ **ONE TO THREE-YEAR LEASE AVAILABLE**
- ✓ **NEAR BANKING, SHOPPING, RESTAURANTS, PARKS,
RUNNING TRAILS, HOTELS AND UPSCALE RESIDENTIAL**
- ✓ **ULTRA HIGH-SPEED INTERNET, PHONE SERVICE
AND CABLE TV AVAILABLE AT EXCELLENT RATES**
- ✓ **CONVENIENT ACCESS TO I-75/I-285**
- ✓ **ON-SITE OWNER/MANAGEMENT**
- ✓ **BROKERS PROTECTED**

CONTACT: G. WILLIAM SPANN 770-624-1793 (IN PARK)



BUILDING 27