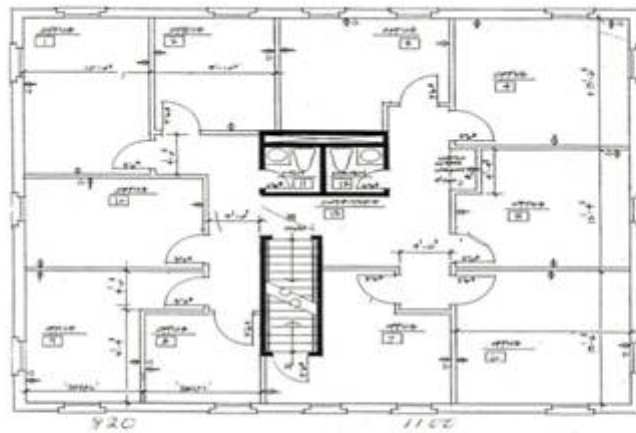


OFFICE SPACE FOR RENT



GOVERNOR'S RIDGE OFFICE PARK
Building #16, Suite #

EXHIBIT "A"



1,920 SQFT AVAILABLE SEPT 1ST!
GOVERNORS RIDGE OFFICE PARK
BUILDING #16 - SUITE 200 AVAILABLE
\$15.00 SQFT- INCLUDES UTILITIES
CAN BE DIVIDED INTO 2 OFFICE UNITS!



TENANT CONTROLLED HEAT & AIR

- JANITORIAL SERVICES INCLUDED
- PAPER PRODUCTS FOR RESTROOMS SUPPLIED
- 2 PRIVATE BATHROOMS-1 PER SIDE
- MONITORED SECURITY SYSTEM
- PLENTY OF PARKING SPACES
- CLOSE TO I-75, I-285, GA400
- PLENTY OF RESTAURANTS & SHOPPING

CONTACT NATALIE THOMPSON- 678-982-0439
FOR APPT OR WITH QUESTIONS!