

OFFICE SPACE FOR LEASE – SECOND FLOOR GOVERNOR’S RIDGE OFFICE PARK



SUITE 300 / BUILDING 24

Full Service Lease / Second Floor

(625 s.f.)

1 Large Corner Office, 1 Restroom, 1 Reception Area & 1 Copy Area.

Rent Includes:

All Utilities (Gas, Electric & Water), Janitorial services (2 days a week)

Common Area Maintenance and Parking.

HVAC with flexible hours.

Renter is responsible for Internet, Cable & Telephone

(*If you need additional space please let us know)

Rental Rate \$989.00 per month

On Site Management / Comcast High Speed Internet Available

CONTACT: Cynthia Sours / csours@inox-design.com / 404 784 2322

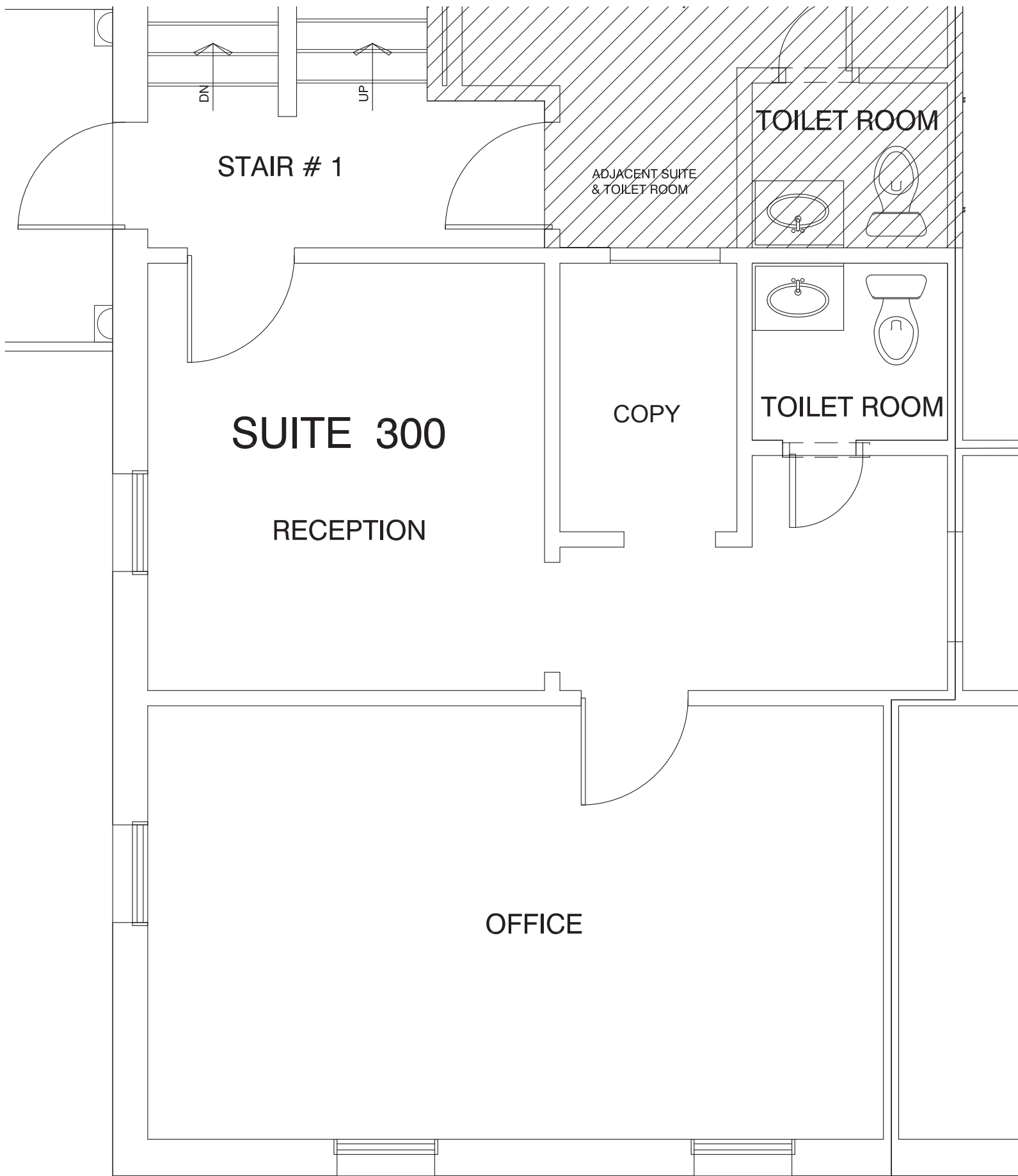


EXHIBIT A